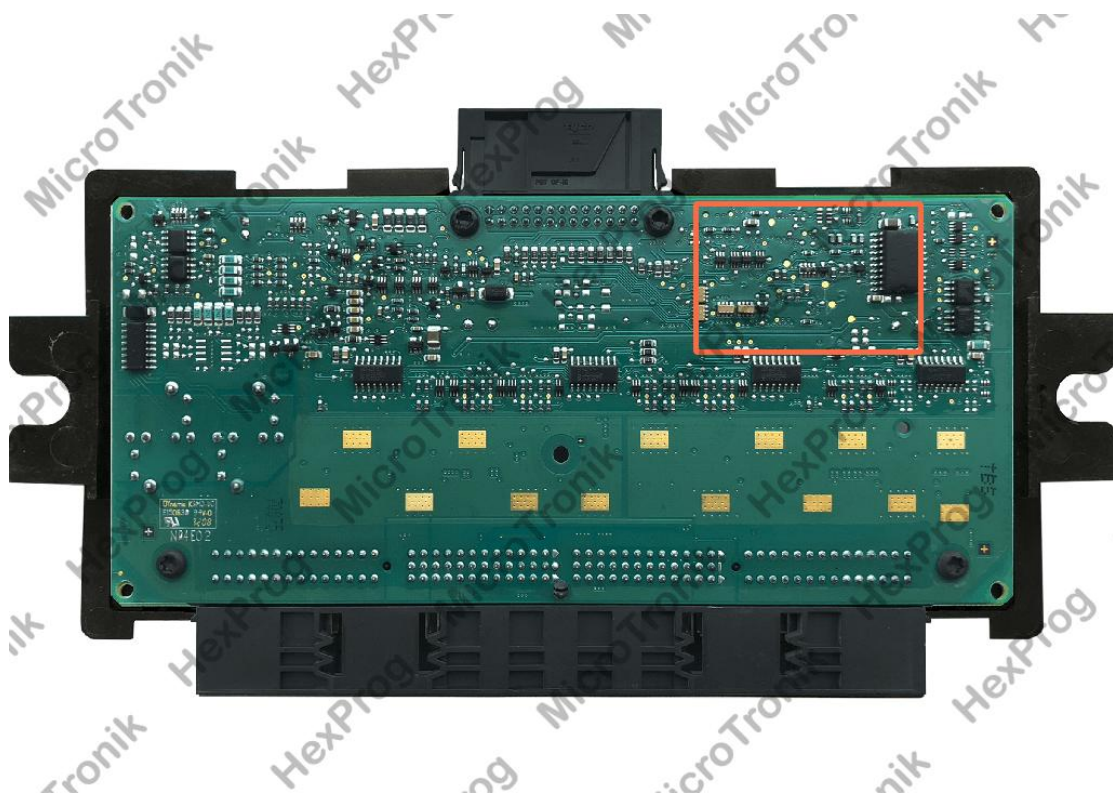


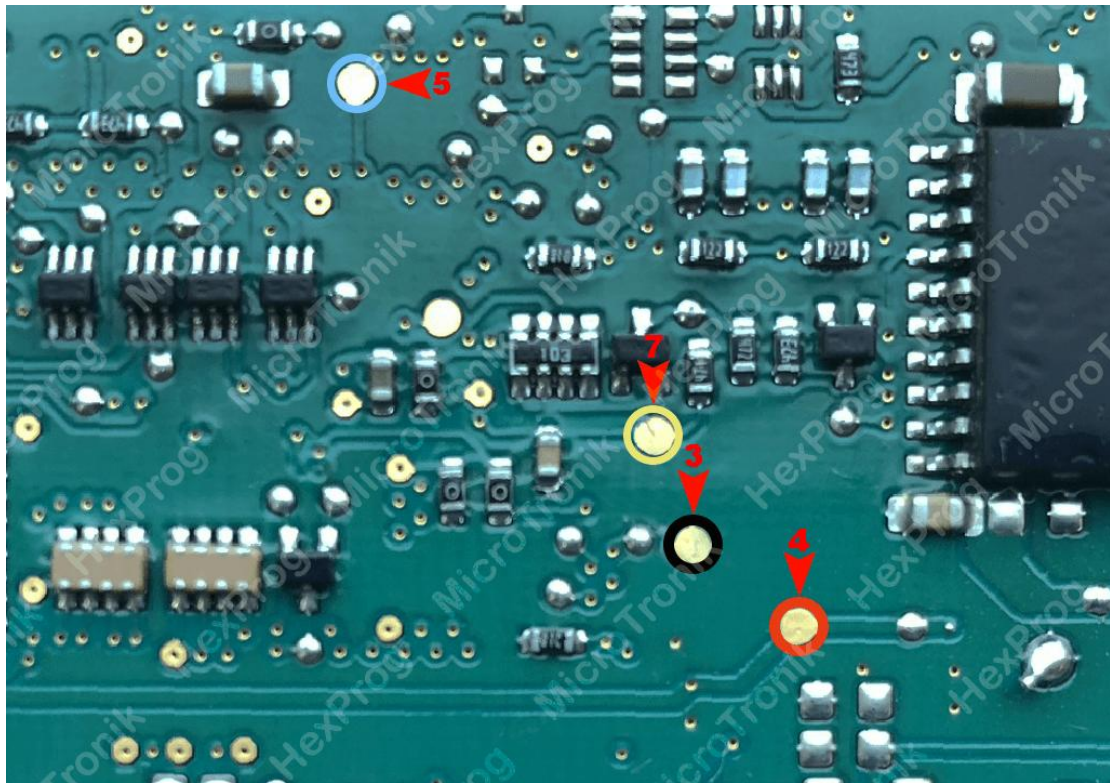
FRM2 BDM WIRING

1. Unplug FRM from the car (Located under driver side trim panel for pedal mechanism. Careless Removal of the module may cause a damage to the car or the control itself, it must be carried under user's RISK)
2. Remove FRM board from the casing



FRM2

3. Solder wires to FRM based on the below connection diagram using BDM cable



FRM2 Wiring

4. Select the FRM/CPU version from HexProg software
5. Do the desired function for read/write FRM in Software
6. Unsolder wires
- 7., Connect FRM back to car

NOTE: In some cases FRM II has lost OBD communication when read/write FLASH, so if you are working on changing FRM data do only EEPROM.

